



PRIME<sup>®</sup>  
AL ARABIA

# PRIME STEEL



# ABOUT PRIME ARABIA

PRIME Al Arabia is a sister concern of ASIA LIGHT CONTRACTING COMPANY which is established in 2007 and becoming as a market leader in Engineering, Design, Fabrication and Installation of architectural Aluminium, Glass and Steel products in the KSA.

We are specialized in all types of facade products such as Structural Glazing, Conventional Curtain Wall, Skylights, Spider Glazing, Doors, Windows, Frame less Glazing, Aluminium Composite Cladding, Canopies etc. We are using local and international systems according to the Client requirements which offers the latest technologies.

PRIME Al Arabia is engaged in engineering, design, installation, STEEL and ALUMINIUM architectural and infrastructural works, FIT-OUT solutions and JOINERY works.



PRIME Al Arabia is a sister concern of ASIA LIGHT CONTRACTING COMPANY which is established in 2007 and becoming as a market leader in Engineering, Design, Fabrication and Installation of architectural Aluminium, Glass and Steel products in the KSA. We are specialized in all types of facade products such as Structural Glazing, Conventional Curtain Wall, Skylights, Spider Glazing, Doors, Windows, Frame less Glazing, Aluminium Composite Cladding, Canopies etc. We are using local and international systems according to the Client requirements which offers the latest technologies.

In order to ensure customer satisfaction, we are strictly adhering to high standard products as per project specifications and offering cost-effective solutions and it is an integral part of our working principles and no compromise policies.

The Factory is located in Riyadh having Aluminium section with an approximate carpet area of 3800 Sq.M. Our factory is equipped with latest machineries and skilled team. This ensures the customer receives a quality product on time. Our engineers and technicians are well trained to operate the machineries and together with their collective experience in the field of Facade systems guarantee the customer a precise product delivered and installed always.

## OUR TEAM

Highly skilled labour, motivated staff guided by qualified management team all brought together after a rigorous selection process ensures highest quality and cost efficiency to every job we undertake.

We have always achieved the highest level of customer satisfaction and this has helped us build a strong and loyal client base throughout KSA across public and private sectors.

## OUR VISION

To be the leaders in providing value-added construction services to our customers by creating successful partnerships with them throughout the construction process. Our vision is to achieve unhindered growth by meeting customer needs in every respect. We believe this can be provided by delivering high-end quality, cost-effective and cutting-edge innovative products.

## OUR **MISSION**

Providing our customers with the highest quality products and services to establish long-lasting relationships. We continually strive to exceed customer expectations and gain their through the utilization of innovative products and the latest technology. Our strong work culture and productivity-driven environment promises sustainable growth not only for our people but also for our customers.



# QUALITY CONTROL

## 9001 QUALITY DOCUMENTATION STRUCTURE



PRIME Quality Control function is to develop and implement an integrated sequence or specific control on quality relative to materials, process and product based on quality aspects of industry specifications and customer requirements, design specifications and manufacturing process requirements to assure a timely shipment of products with proper quality at relatively minimum costs.

### CODES FOR WELDING & PROCESSES

The primary purpose of this Quality System Manual is to describe the Quality System currently in practice at Prime fabrication.

This manual is intended to be in compliance with ISO Quality System – Model for Quality Assurance in Steel Fabrication and Installation. The distribution of this manual is controlled through the Quality Manager. Wherever 'Company' is used within this manual it shall mean BSM Fabrication.

### 2.0 COMPANY QUALITY POLICY

PRIME Fabrication is committed to have an on-going improvement in the quality and delivery of all fabricated products and services, at a competitive price, and to maintain Prime Fabrication's position as a supplier of choice.



# HEALTH & SAFETY



Safety is at the core of PRIME operation. PRIME advantage relies on its highly specialized team. The company therefore attaches the utmost importance to the health and safety of every individual. Care is given to safety in the same spirit of the efficiency that drives all of Prime operations. Aside from expecting all employs to abide by safety instructions,

PRIME also devises ways to facilitate their application. For example, at times, 10 extra steps separating a machine operator from access to helmets and goggles is enough to affect the safety of the workflow. PRIME continuously monitors the factory floor and the heavy equipment operation bays to guarantee that the expected instructions are easy to apply.





# ABOUT PRIME STEEL

PRIME Steel is a division of Prime Arabia, established by Arabian Company to meet the needs of clients seeking a comprehensive service destination. We specialize in delivering integrated design, engineering, and construction solutions for industrial, commercial, and recreational projects. PRIME Steel are committed to excellence and dedicated to pioneering innovative solutions within the construction industry.



# VISION

To be the leading provider of innovative and sustainable construction solutions in the region, recognized for our commitment to quality, safety, and customer satisfaction. We aim to shape the future of civil engineering and infrastructure development through our advanced technologies and design excellence.

# MISSION

Our mission at PRIME Steel is to deliver comprehensive design, engineering, and construction services that meet the unique needs of our clients in industrial, commercial, and recreational sectors. We strive to:

- **Foster Innovation:** Continuously enhance our processes and offerings through innovation and the latest technological advancements.
- **Ensure Quality:** Maintain the highest standards of quality and safety in all our projects, delivering results that exceed client expectations.  
Promote Sustainability: Implement sustainable practices that minimize our environmental impact and contribute positively to the communities we serve.
- **Build Relationships:** Cultivate long-lasting partnerships with our clients, stakeholders, and employees through transparency, integrity, and collaboration.

Through our dedicated efforts, we aim to contribute to the growth and development of the region's infrastructure while adapting to the evolving needs of our clients.



## OUR OBJECTIVES

Our objective is to build a strong reputation founded on honesty, professionalism, and an unwavering commitment to quality. By prioritizing these core values, we ensure that every project reflects our dedication to achieving excellence and satisfying our clients' needs.

PRIME STEEL, we foster a robust work ethic and a positive corporate culture that encourages our employees to strive for excellence in their work. We create an environment where motivation and collaboration thrive, enabling our team to implement and deliver the highest quality standards consistently.



# OUR STRATEGY

At PRIME Steel, our strategic direction is driven by a commitment to excellence, innovation, and sustainable growth. Our strategy focuses on the following key pillars:

**Innovation and Technology:**

We invest in cutting-edge technologies and innovative construction methods to enhance efficiency, reduce costs, and improve project delivery timelines. By embracing new technologies, we aim to stay ahead of industry trends and continuously improve our offerings.

**Quality Assurance:**

Maintaining the highest standards of quality is at the core of our operations. We implement rigorous quality control measures throughout all stages of our projects, ensuring that our work meets or exceeds client expectations and industry standards.

**Client-Centric Approach:**

Our clients are at the heart of everything we do. We prioritize understanding their unique needs and challenges, allowing us to provide tailored solutions that deliver maximum value. Building long-term relationships based on trust and collaboration is crucial to our success.

**Sustainability:**

We are committed to sustainable practices that minimize our environmental impact and promote responsible resource management. Our strategy includes the use of eco-friendly materials, energy-efficient designs, and sustainable construction practices to contribute positively to the communities we serve.

**Market Expansion:**

We pursue opportunities to expand our presence in existing and new markets. By leveraging our expertise and reputation, we aim to diversify our project portfolio and capture emerging business opportunities in the construction and infrastructure sectors.

**Operational Excellence:**

We continually strive to improve our operational efficiency through streamlined processes and best practices. By optimizing our operations, we enhance productivity and reduce project delivery times while maintaining quality and safety.

# OUR CAPABILITIES

At PRIME Steel, we pride ourselves on our comprehensive capabilities that enable us to deliver innovative and effective solutions in the construction and civil engineering sectors. Our expertise spans various areas, ensuring that we can meet the diverse needs of our clients. Here are our core capabilities:



## Design and Engineering:

Our team of experienced engineers and architects collaborates to produce innovative designs that balance functionality, aesthetics, and sustainability. We utilize advanced design software and building information modeling (BIM) to ensure precision and clarity throughout the design process.



## Project Management:

We employ robust project management methodologies to oversee every aspect of our projects, from inception to completion. Our project managers ensure that timelines, budgets, and quality standards are met while effectively communicating with stakeholders throughout the process.



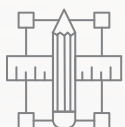
## Steel Fabrication:

Our state-of-the-art fabrication facilities are equipped to manufacture a wide range of steel products and components. We adhere to strict quality control standards, ensuring that our fabricated structures are durable, reliable, and precisely crafted to meet project specifications.



## Construction Services:

With a skilled workforce and extensive experience, we provide comprehensive construction services for various project types, including industrial facilities, commercial buildings, and infrastructure projects. Our commitment to safety and quality remains paramount at every stage of construction.



## Site Development:

We offer complete site development solutions, including land clearing, grading, excavation, and infrastructure installation. Our expertise ensures that sites are prepared efficiently and effectively for subsequent construction phases.



# OUR CAPABILITIES



## **General Contracting:**

As a general contractor, we coordinate all aspects of construction projects, managing subcontractors and ensuring that all work aligns with client expectations and project specifications. Our strong leadership and negotiation skills contribute to successful project execution.



## **Quality Assurance and Compliance:**

We implement stringent quality assurance protocols to ensure compliance with safety regulations, industry standards, and client requirements. Our commitment to quality extends to all materials and processes used in our projects.



## **Sustainability Initiatives:**

We prioritize sustainable practices throughout our operations, from design to construction. Our capabilities include the use of eco-friendly materials, energy-efficient building techniques, and waste management strategies that minimize environmental impact.



## **Maintenance and Support:**

Our commitment to our clients doesn't end at project completion. We provide ongoing maintenance support and services to ensure the long-term performance and durability of our structures, helping clients maintain their investments over time.



## **Consultative Services:**

We offer consultative services, providing expert advice and insights on project feasibility, budgeting, and timelines. Our collaborative approach ensures that clients are well-informed and empowered to make decisions that align with their goals.

At PRIME Steel, our diverse capabilities, combined with our commitment to quality and client satisfaction, position us as a trusted partner for all your construction and infrastructure needs. We are dedicated to delivering exceptional results that enhance both the functionality and value of your projects.



# OUR SERVICES

PRIME STEEL is proud to have successfully designed, developed, and constructed a diverse portfolio of significant civil engineering and infrastructure projects across the Kingdom. Our extensive experience includes the creation of quality services.



# We Build

FACTORIES

SHOPPING MALLS

WAREHOUSES

DISTRIBUTION CENTERS

OFFICE COMPLEXES

CORPORATE SHOWROOMS

AIRCRAFT HANGARS

WORKSHOPS

SUPERMARKETS

HYPERMARKETS

Our commitment to excellence and innovation ensures that each project is executed to the highest standards, meeting the unique requirements of our clients and contributing to the region's development.



# OUR TEAM

At PRIME STEEL, we employ a dedicated team of knowledgeable and highly skilled professionals in the construction industry. Our environment is characterized by motivated employees who are committed to continuous improvement and uphold the highest standards of business ethics and corporate citizenship.

This commitment leads to added value for our clients, as we emphasize collaboration and innovation in every project. Furthermore, we believe in fostering a sense of ownership among our employees, allowing each individual to share in our collective success and contribute to the growth and quality of our work.



# OUR PRODUCTS

PRIME STEEL offers a diverse range of steel products designed to meet the varying needs of our clients across different sectors.



# OUR PRODUCTS

## OUR PRODUCTS INCLUDE:

### STRUCTURAL STEEL:

- BEAMS
- COLUMNS
- ANGLES
- CHANNELS
- PLATES

### STEEL FABRICATIONS:

- CUSTOM STEEL COMPONENTS
- PRE-ENGINEERED STRUCTURES
- SPECIALIZED FABRICATIONS FOR UNIQUE PROJECTS

### STEEL SHEETS AND COILS:

- HOT-ROLLED AND COLD-ROLLED SHEETS
- GALVANIZED STEEL SHEETS
- STEEL COILS FOR VARIOUS APPLICATIONS

### STEEL TUBING AND PIPES:

- SQUARE AND RECTANGULAR TUBING
- ROUND PIPES
- PIPELINE SOLUTIONS FOR VARIOUS INDUSTRIES

# OUR PRODUCTS



## **REINFORCEMENT STEEL:**

- REBAR IN VARIOUS GRADES AND SIZES
- STEEL MESH AND REINFORCEMENT PRODUCTS FOR CONCRETE STRUCTURES

## **METAL DECKING:**

- COMPOSITE AND NON-COMPOSITE DECKING SOLUTIONS FOR FLOOR SYSTEMS

## **PRE-ENGINEERED BUILDINGS:**

- FULLY DESIGNED AND FABRICATED STEEL BUILDING SYSTEMS FOR INDUSTRIAL AND COMMERCIAL APPLICATIONS

## **ACCESSORIES:**

- STEEL BRACKETS
- CLAMPS
- FASTENERS AND CONNECTORS

## **CUSTOM SOLUTIONS:**

- TAILORED STEEL PRODUCTS AND SOLUTIONS DESIGNED TO MEET SPECIFIC PROJECT REQUIREMENTS AND INDUSTRY STANDARDS.

Our commitment to quality, durability, and innovation ensures that our steel products are suitable for a wide range of applications in construction, manufacturing, and infrastructure development.



# OUR PROJECTS

At PRIME Steel, we take pride in our extensive portfolio of successful civil engineering and infrastructure projects completed across the Kingdom. Our expertise spans a wide range of sectors, highlighting our ability to meet diverse client needs.



# OUR PROJECTS

## Our completed projects include:

**FACTORIES:** Tailored industrial spaces designed for optimal efficiency and productivity.

**SHOPPING MALLS:** Modern retail environments that enhance the shopping experience.

**WAREHOUSES:** Spacious and efficient facilities for storage and distribution.

**DISTRIBUTION CENTERS:** Strategically designed hubs for streamlined logistics and operations.

**OFFICES:** Contemporary office spaces that foster collaboration and innovation.

**CORPORATE SHOWROOMS:** Bespoke facilities showcasing brands and products effectively.

**WORKSHOPS:** Versatile spaces equipped for a range of industrial applications.

**Supermarkets and Hypermarkets:** Comprehensive retail solutions that cater to community needs.

Our commitment to excellence is reflected in each project we undertake, with a focus on quality, safety, and sustainability. Discover the diversity and impact of our work through our gallery of completed projects, showcasing our dedication to transforming the Kingdom's landscape and infrastructure

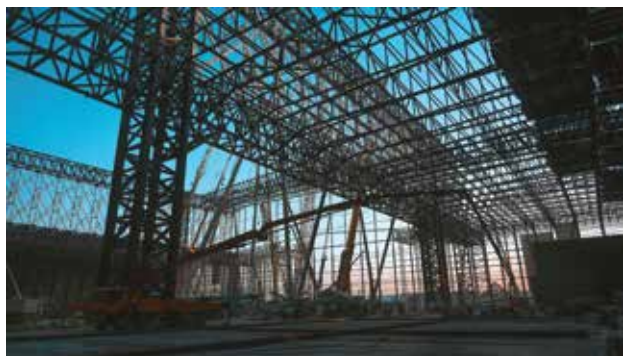












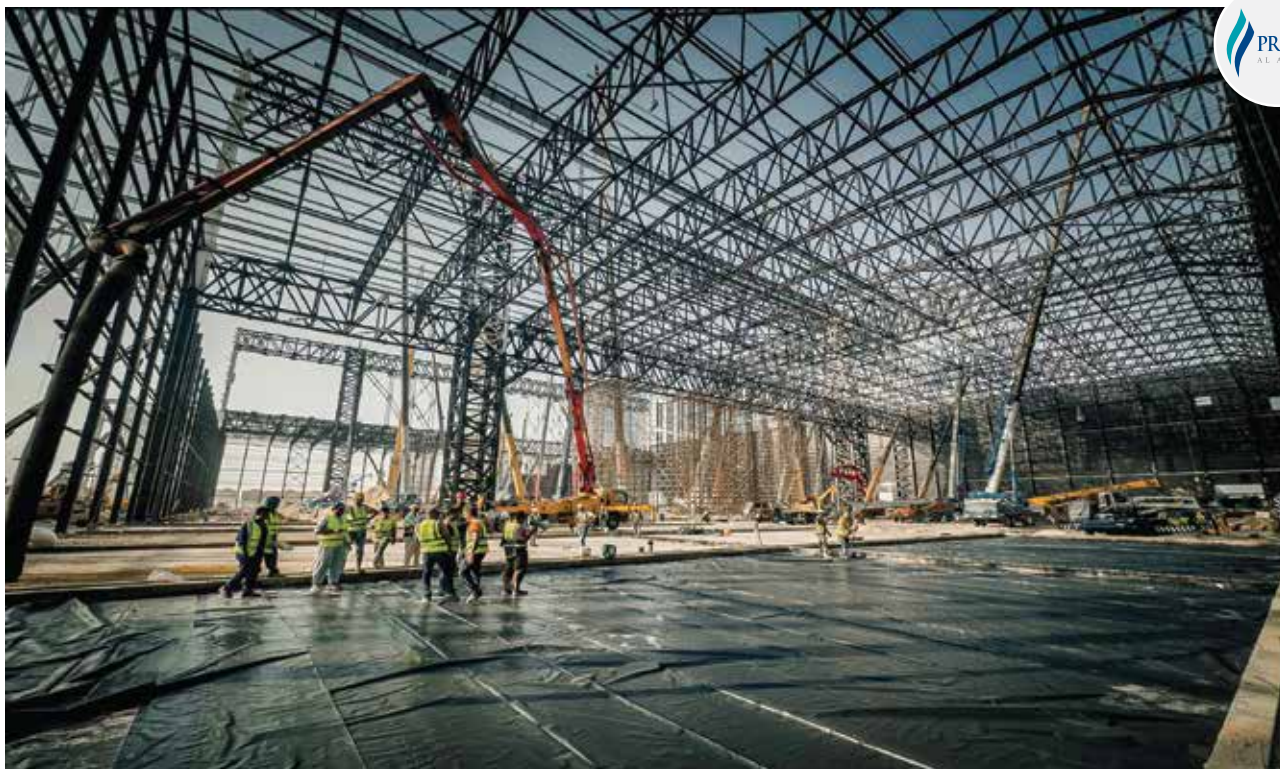
































[www.prime-ind.co](http://www.prime-ind.co)

T: +966 11 432 2219  
E : info@prime-ind.co  
w : www.prime-ind.co  
Riyadh Exit- 18, Isthambul St.  
Saudi Arabia

